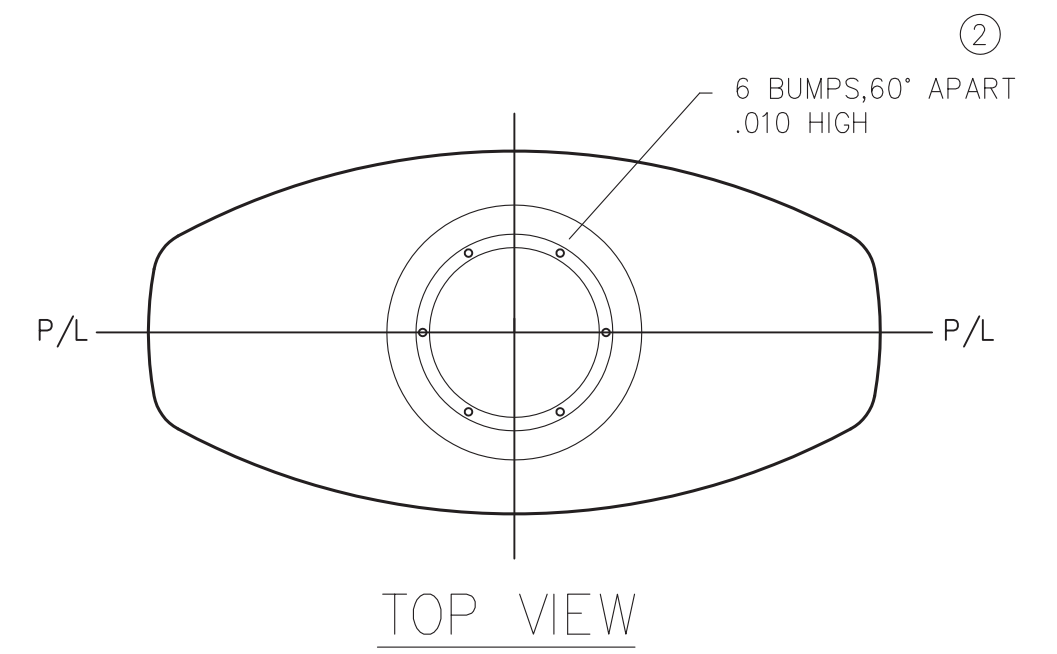
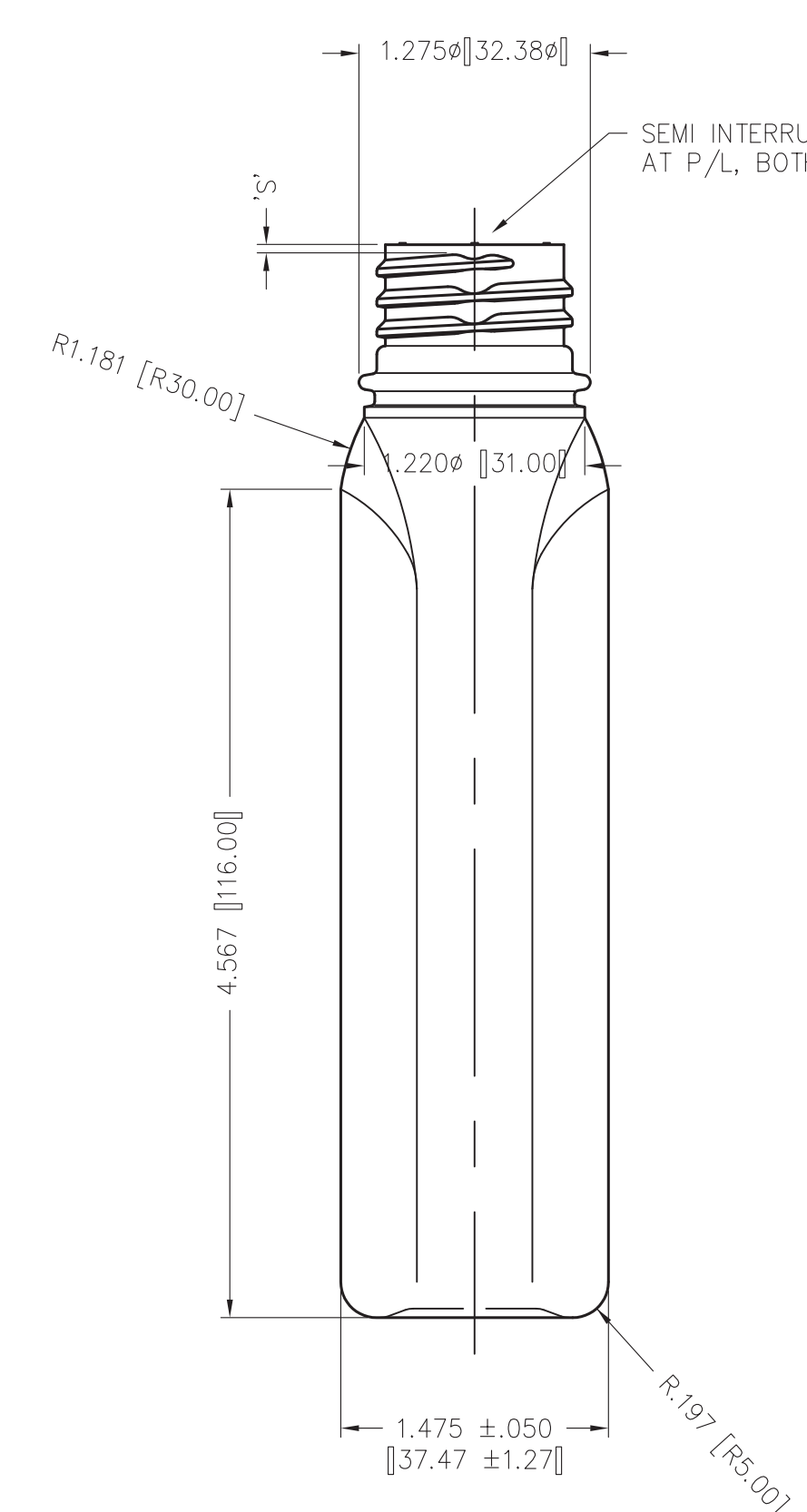
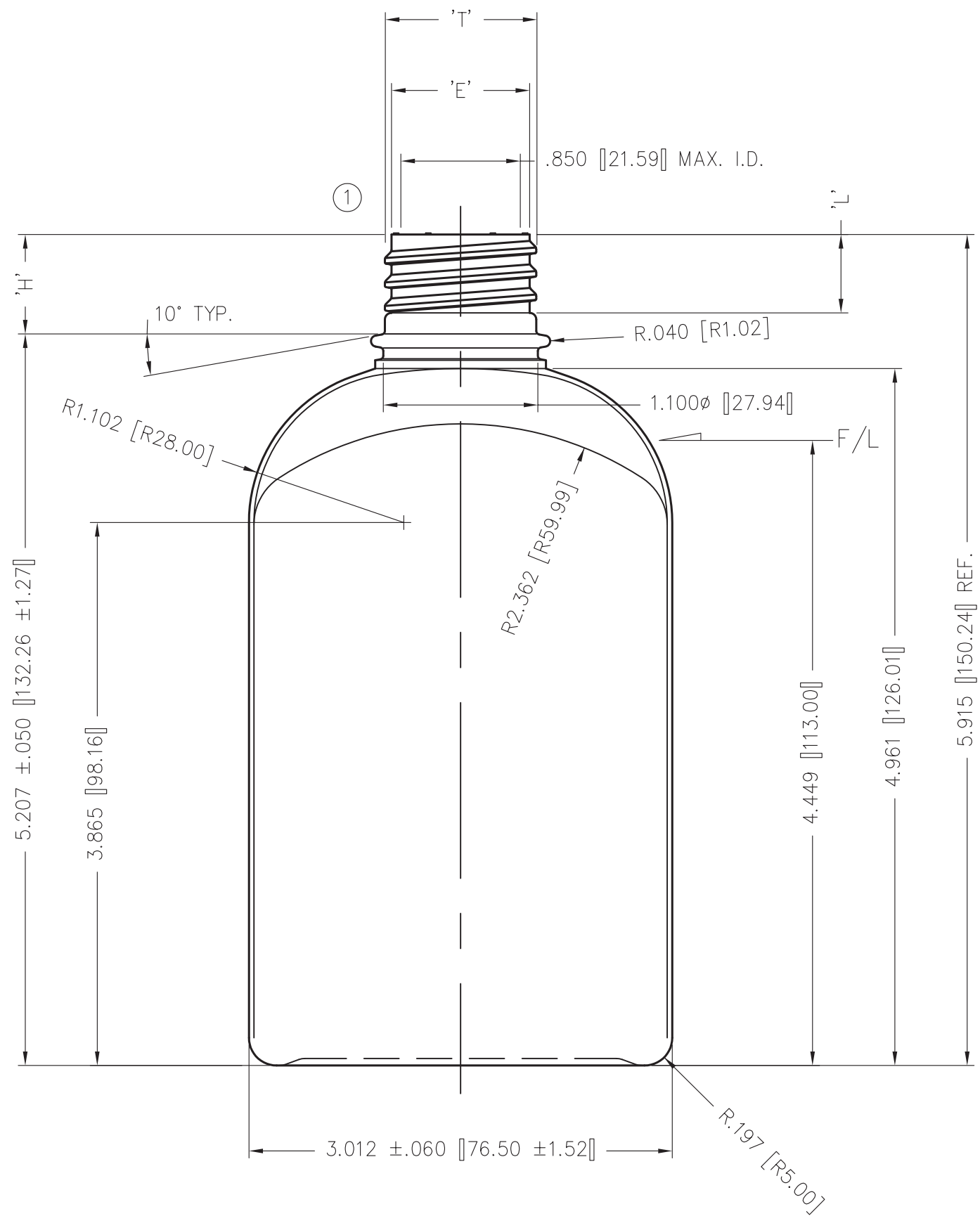
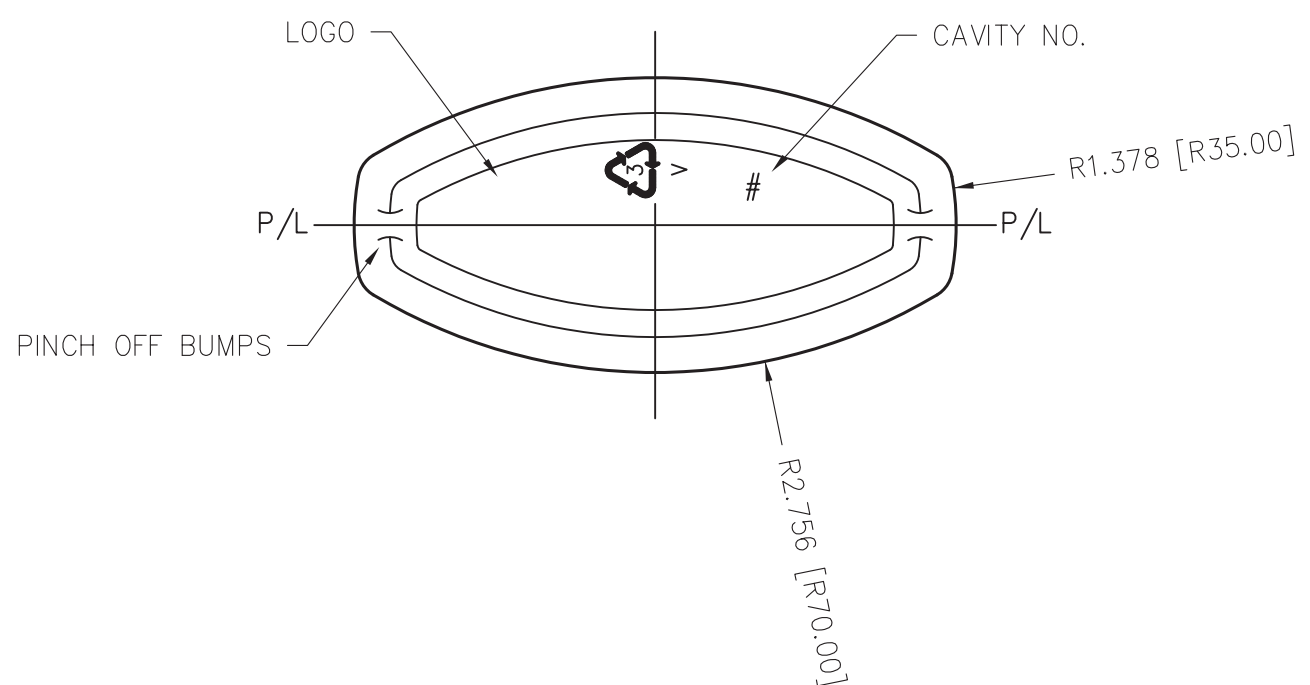


**Compact Mould**



③ NOTE: MIN. .015 WALL



REV.NO.	DESCRIPTION	DATE
③	NOTE ADDED	FEB.18/99
②	6 BUMPS ADDED TO TOP OF NECK	FEB.18/99
①	NECK REVISED AS PER SAMPLE	FEB.18/99

NECK FINISH: M28-SP410 (SPECIAL) ①		GRAM WT. 38 ±2.5			
'T'	'E'	'H'	'S'	'L'	'W'
1.078 ±0.010	.984 ±0.010	.708 ±0.015	.046 ±0.015	.558 MIN.	_____
27.38 ±0.25	24.99 ±0.25	17.98 ±0.38	1.17 ±0.38	14.17 MIN.	_____
HELIX <:	2° 57'	T.P.I.:	6	CUTT. DIA.:	.500
CAPACITY TO FILL LEVEL BEFORE DECORATING		235 ml ±7			
CAPACITY TO FILL LEVEL AFTER DECORATING		_____			
OVERFLOW CAPACITY BEFORE DECORATING		258 ml ±7			
OVERFLOW CAPACITY AFTER DECORATING		_____			
DRAWN BY: D					
SCALE: 1-1		DATE: NOV.2/98		DESC. 235ml CITRUS OBL.	
BOTTLE MAT'L: PVC		CAD NAME: PD\3-3782		DRAWING NO. 3-3782-P	
This drawing subject to standard industry tolerances S.P.I.				MOULD NO. 3-20726-3	

DRAWING CHECKED SPECIFICALLY FOR:  
 NECK FINISH .....  
 WEIGHT .....  
 CAPACITY .....  
 MATERIAL .....  
 SPECIAL REQUESTS .....  
 PRODUCT DESIGN TO BE APPROVED BEFORE MOULD CAVITIES ARE MACHINED.  
 APPROVED BY .....  
 DATE .....

TEMPORARY DRAWING  
 THIS IS A SUGGESTED DESIGN FOR CUSTOMER APPROVAL.  
 FINAL SIZES AND SPECIFICATIONS ARE SUBJECT TO  
 FINAL PRODUCTION QUALIFICATIONS.