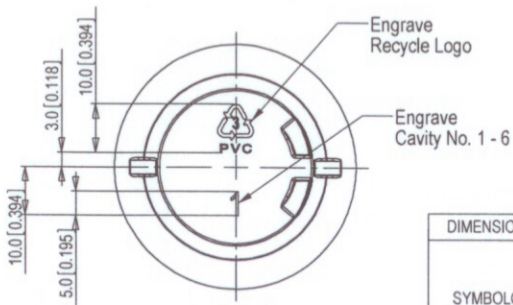


Thread: 24-410
 Pitch: 8 turns/inch (3.18mm)
 Turns: 1.5 full turns
 Critical dimensions:
 "T" - $\varnothing 23.7 \pm 0.2$ [932 +/- .008]
 "E" - $\varnothing 21.5 \pm 0.2$ [848 +/- .008]
 "S" - 1.2 ± 0.4 [046 +/- .015]
 "H" - 16.4 ± 0.4 [646 +/- .015]
 "I" - $\varnothing 18.6 \pm 0.3$ [732 +/- .012]

DETAIL C
 SCALE 2 : 1



UVI 4800/2014 GENERAL NOTE:
 ELEKTRONICKÝ PŁUK 100% GEOMETRIČNÉ DOPLADNÍ (ELECTRONIC FILE 100% GEOMETRICALLY ACCURATE)
 NEC DOPLAČKA SIE ZMĚNÍ (CORRECTIVE/HANDWRITTEN CHANGES ALLOWED)

Brimful = 265 ml ± 8ml

w3	-	Tolerance on the neck and neck legend have been updated	MO	29.09.2010
w2	-	Changed bottle weight and description	MO	27.09.2010
w1	-	Moved driving lug	MO	24.09.2010
In (Rev)	Issue of Rev	Disc (Description)	Entered (C)	Date (Date)

DIMENSIONS IN MM UNLESS OTHERWISE SPECIFIED	
SYMBOLY per ANSI/ASME T14.5M - 1994	TOLERANCES: .X ± 0.4 .XX ± 0.13 .XXX _____ ANGULAR $\pm 1/2^\circ$ MACHINE FINISH $\sqrt{0.1}$
DO NOT SCALE DRAWING	REMOVE ALL BURRS & SHARP EDGES

Constructed	MO	23.09.2010	Material (Mat)	PVC 24g ±2g	Issue Quantity	Lista materiova (BOM)
Entered (C)	JP	24.09.2010	Scale (Scale)	1:1	Referenc (Ref)	Arkus (Sheet)
A3			Notes (Note)	8oz Cylinder (24-410 Finish)	Mr rys (Fig No)	Verz (Revision)
					41004-01_00_01_w3	w3