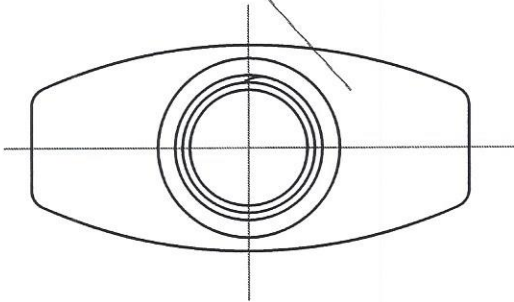
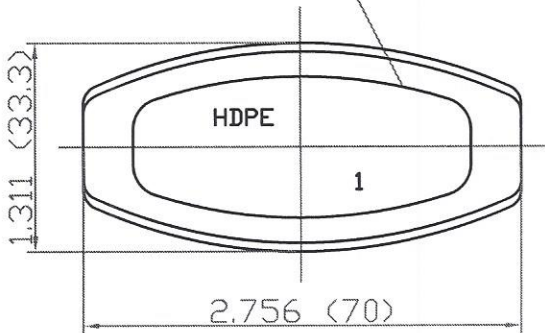


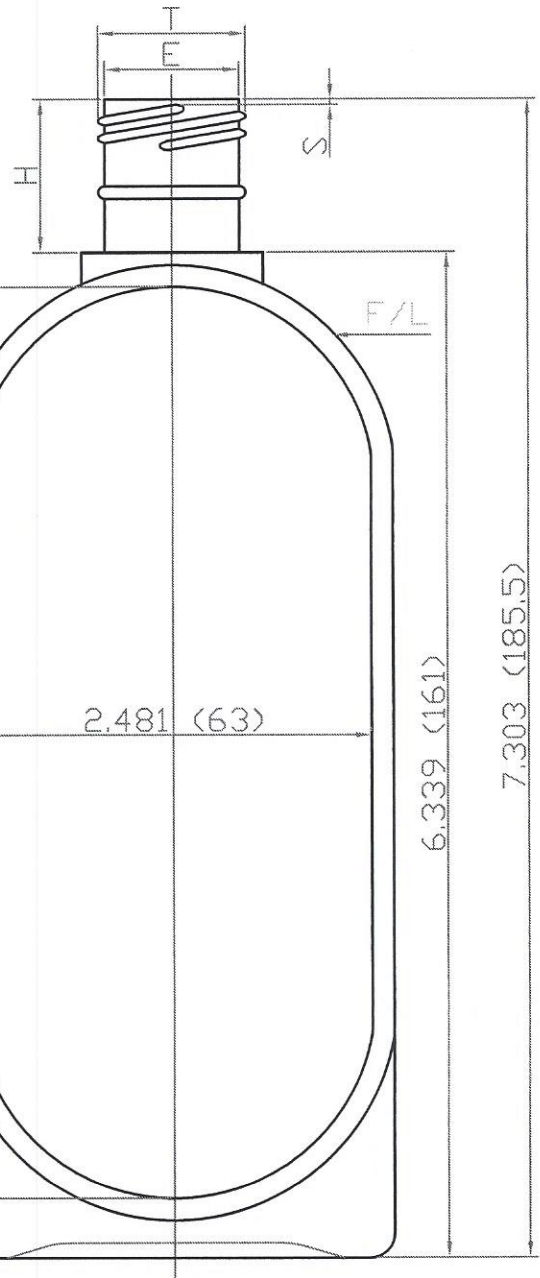
Top view



Bottom view



FOR REFERENCE ONLY



NOTE:

- 1) CONTAINER SPECIFICATIONS PER STANDARD INDUSTRY TOLERANCES.
- 2) DIMENSIONS IN BRACKETS ARE IN MILLIMETERS
- 3) PRODUCT & PACKAGING COMPATIBILITY IS TO BE DETERMINED BY USER.
- 4) CONTAINER DIMENSIONS MAY CHANGE ACCORDING TO WEIGHT AND COLOR.

1	L/Z	F/L VIEW	09/02/04			
NO.	REV.	BY	DATE:			
NECK FINISH:		24/415	GRAM WT:		22+-2.0	
'T'	'E'	'H'	'S'	'L'	'W'	
0.932±.008	0.849±.008	0.957±.015	0.046±.015			
DRAWN BY: L/Z		DESP. 8 oz Tall Oval				
SCALE:		DRAWING NO. MMP#1049				
MAT'L HDPE		MOLD NO. 1049				
DATE: Jun, 2, 2004						