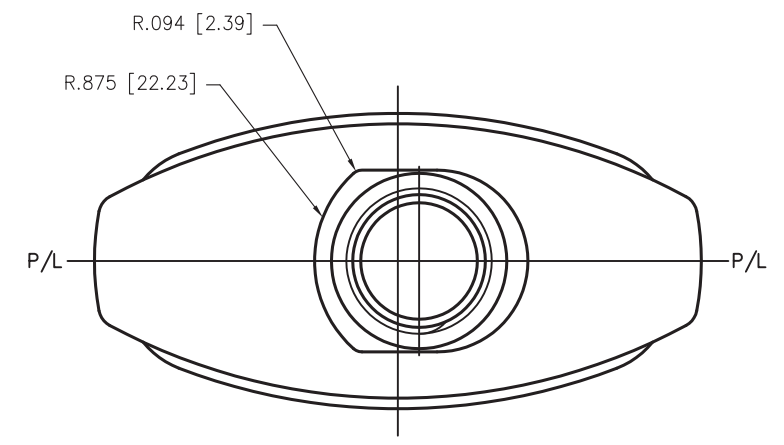
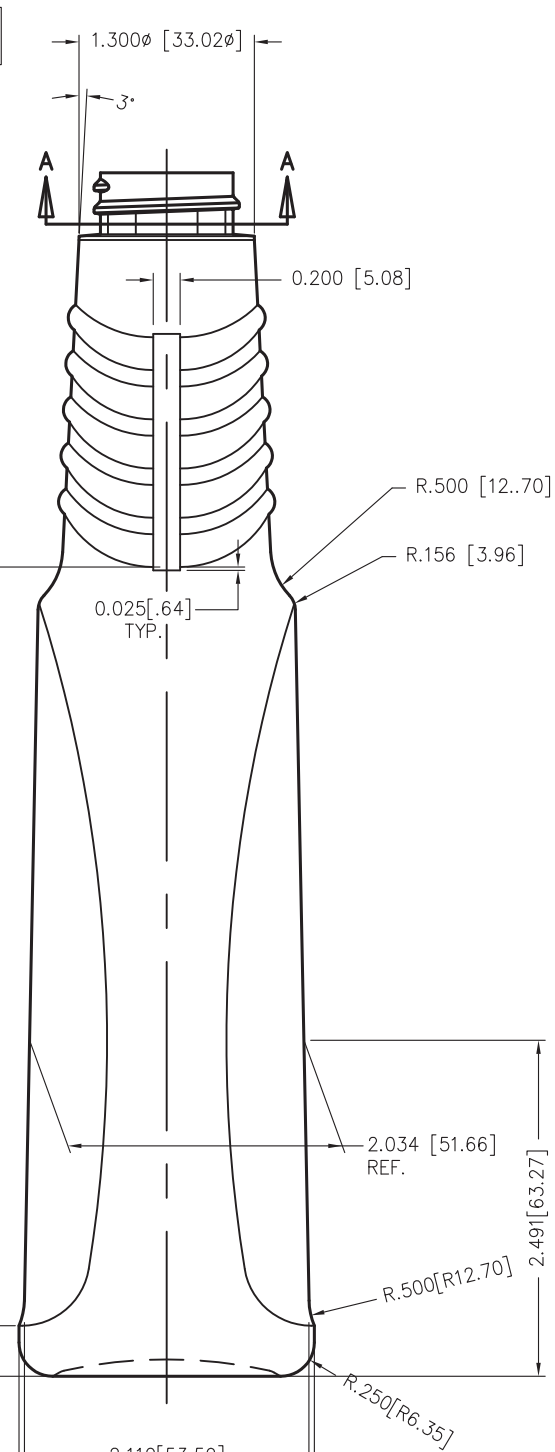
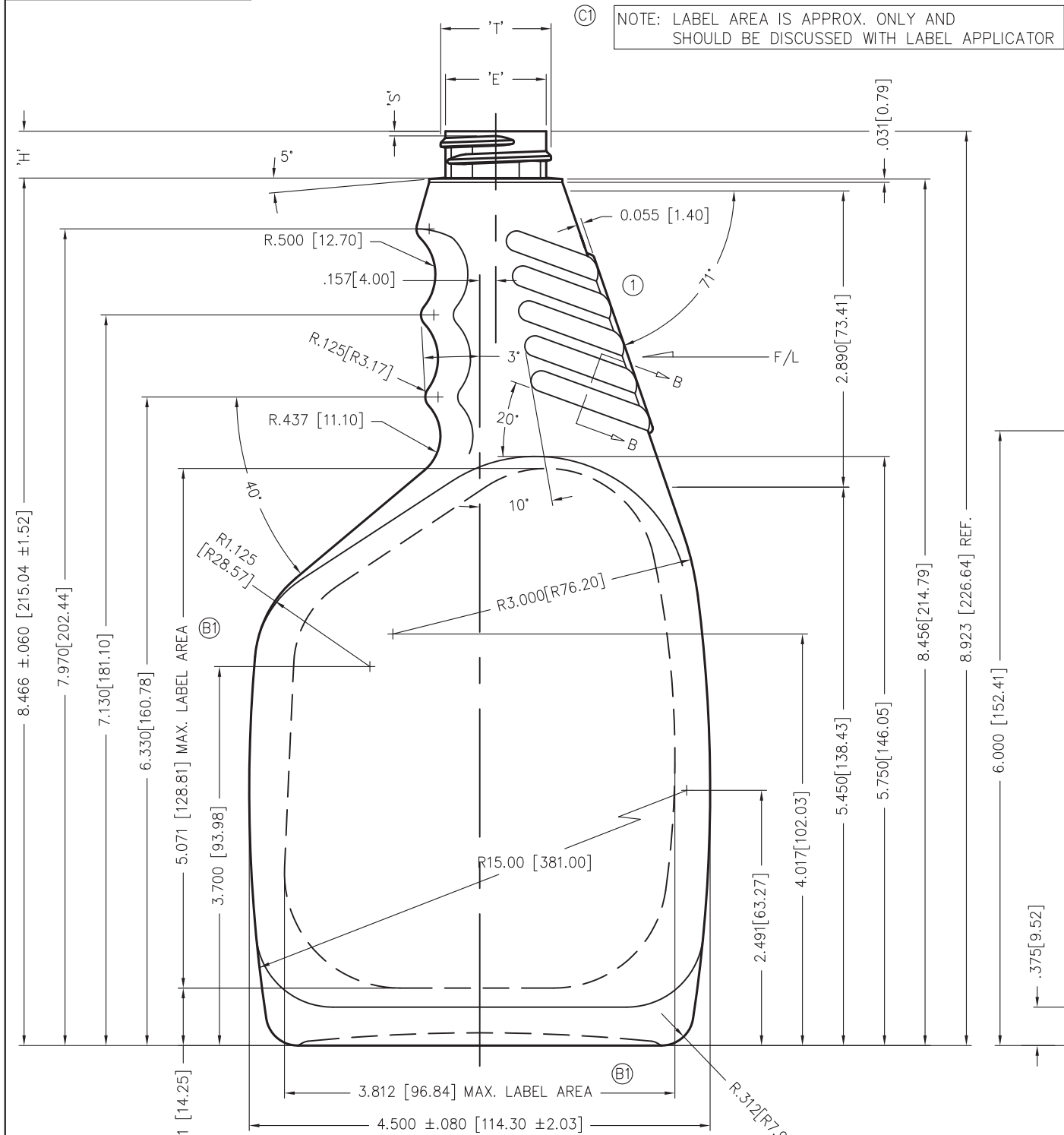
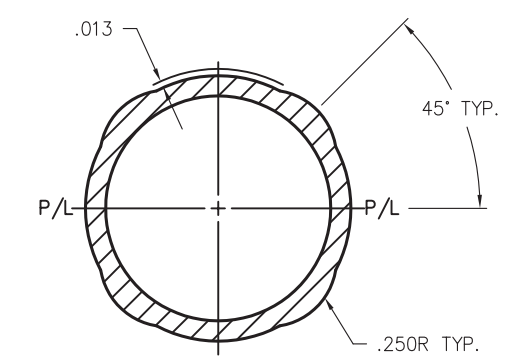


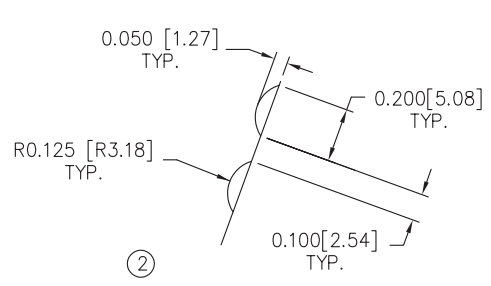
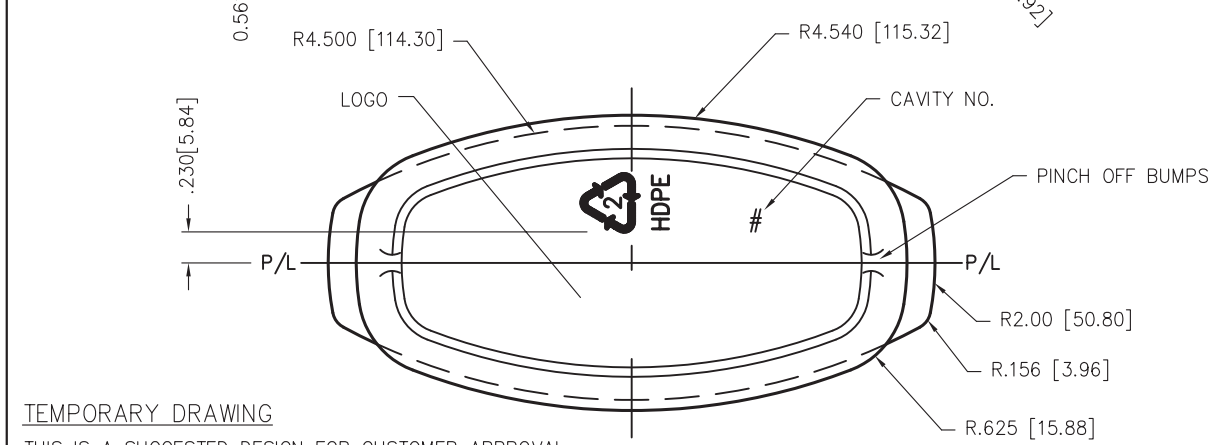
Compact Mould



TOP VIEW



SECTION: A-A
SCALE: 2-1



SECTION B-B
SCALE: 2-1

①	ADD NOTE	APR 26,06
②	SHOW MAX. LABEL AREA SUPPLIED BY CUST.	MAY 26/05
③	SECTION B-B ADDED	JUNE 2/98
④	RIBS ADDED	JUNE 2/98

REV.NO.	DESCRIPTION	DATE
NECK FINISH: M28 SP400 (SPECIAL 'H') GRAM WT. 45 ± 2.5		
'T'	'E'	'H'
1.078 ± 0.010	.984 ± 0.010	.457 ± 0.015
27.38 ± 0.25	24.99 ± 0.25	11.61 ± 0.38
HELIAX <: 2' 57' T.P.I.: 6 CUTT. DIA.: .500 [12.70]		
CAPACITY TO FILL LEVEL BEFORE DECORATING 650.6 ml ± 13 (22oz.)		
CAPACITY TO FILL LEVEL AFTER DECORATING _____		
OVERFLOW CAPACITY BEFORE DECORATING 706 ml ± 13		
OVERFLOW CAPACITY AFTER DECORATING _____		
DRAWN BY: DS DESC. 22oz. SPRAYER		
SCALE: 1-1 DATE: APRIL 24 98 DRAWING NO. 3-3609-PC		
BOTTLE MAT'L: HDPE MOULD NO. 3-19127-3		
CAD NAME: PD\3-3609		

DRAWING CHECKED SPECIFICALLY FOR:
 NECK FINISH
 WEIGHT
 CAPACITY
 MATERIAL
 SPECIAL REQUESTS
 PRODUCT DESIGN TO BE APPROVED BEFORE MOULD CAVITIES ARE MACHINED.
 APPROVED BY
 DATE
 This drawing subject to standard industry tolerances S.P.I.

TEMPORARY DRAWING
 THIS IS A SUGGESTED DESIGN FOR CUSTOMER APPROVAL.
 FINAL SIZES AND SPECIFICATIONS ARE SUBJECT TO
 FINAL PRODUCTION QUALIFICATIONS.