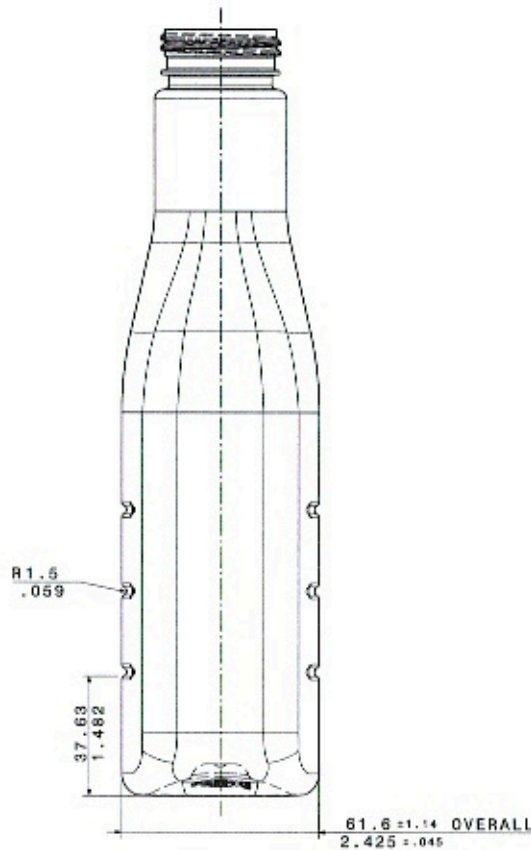
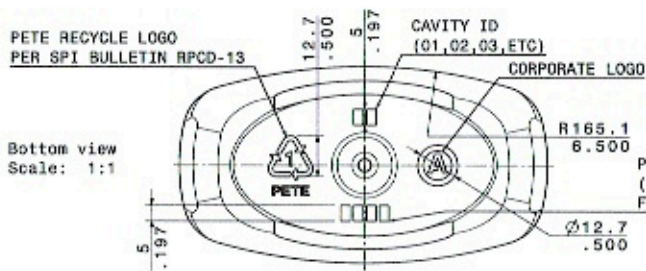


Front view
Scale: 1:1



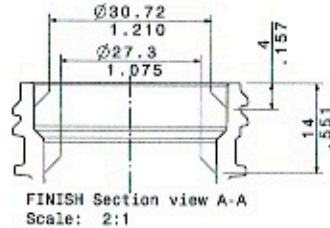
Right view
Scale: 1:1



Bottom view
Scale: 1:1

ALL BASE ENGRAVING
PER CAD GEOMETRY
RECESSED IN MOLD
0.3mm / .012",
RAISED ON CONTAINER.

PRODUCT ID
(SAME 4 DIGITS AS
FOUND IN DWG No.)



FINISH Section view A-A
Scale: 2:1

ALTERNATIVE PREFORMS

PREFORM #	DESCRIPTION	TARGET OVERFLOW	FINISH DRAWING
P-3130-PD	64.121gm	986 ± 15ml	F-1183-PD

Rev	Description	By	Date	FOR
A	Original Release	RJS	14OCT05	10304260-4
B	REDESIGNED AND REDRAWN	RJS	27MAY05	10304260-5
C	REDESIGNED AND REDRAWN	RJS	17MAY05	10304260-6
D	REDESIGNED AND REDRAWN	KS	01DEC05	10304260-7
E	Added gate/shortens ribs	WS	21MAY05	10304260-8
F	REDESIGNED NECK, DELETED DRAFT	KS	05APR06	10304260-10
G	Changed Finish Reference	WVC	28SEP06	10304260-103

Notes:

- Dimensions are nominal in millimeters/inches.
- This drawing represents the bottle 72 hours after manufacture when stored at normal conditions.
- The dimensional tolerances to be applied to all height dimensions are the same as the tolerances applied to the Overall Height of the container.
- The dimensional tolerances to be applied to all diameters, widths and thickness dimensions are the same as the tolerance applied to the major diameter or width of the container.
- The weight shown on the drawing is based on the design weight of the preform. The actual weight will vary based on the actual production weight of the preforms.
- The fill levels are based upon water at room temperature.
- Dimensions marked with a "*" represent quality gauge gds and "M" represent manufacturing gauge gds.

Capacity Specification

Overflow Capacity: 995 ± 15 ml

or Capacity Tolerances

	Individual	Average
Fresh		
Fill Point Capacity		
Overflow Capacity		
Aged		
Fill Point Capacity		
Overflow Capacity		
As Delivered		
Fill Point Capacity		
Overflow Capacity		

Additional Information

Projected Area @ P/L:	Min. Half Length:	Max. Half Length:
sq.cm	263.378 mm	296.576 mm

Volume & Weight Information

Calculated Overflow Capacity:	Calculated Fill Line Capacity:
884 ml	948 ml
Total Mat Vol.:	Total Container Weight:
41.05 cc	56.0 ± 1 gm
Mat 1 Vol. in Cont Body:	Container Body Weight:
36.78 cc	50.2 gm
Mat 1 Vol. in Finish:	Finish Weight:
4.27 cc	5.7 gm
Mat 1 Vol. in Preform Body:	Preform Body Weight:
cc	gm
Surface Area Below Neck Finish:	Avg. Wall Thickness:
624.926 sq.cm	.023"/0.59 mm

Drawing Information

Preform Drawing:	Finish Drawing:	Reference Drawing:
P-3456-PD	F-3226-PD	C-4020-ES1
Date:	Drawn by:	Customer:
14OCT05	RJS	VANLAW FOODS

TITLE: 32oz SALAD DRESSING

Drawing Type:	Product Drawing
Drawing Number:	Rev:
C-4040-PD	G

CONFIDENTIAL

IN CASE OF THE MASTER MODEL FOR THIS PREFORM THESE DOCUMENTS ARE THE EXCLUSIVE PROPERTY OF AMCOR TOSOL PLASTICS. THE INFORMATION CONTAINED HEREIN, AND ANY MODEL CONSTRUCTION, PREFORMS OR OTHER ARTICLES RECEIVED, IS OF A CONFIDENTIAL AND PROPRIETARY NATURE AND MUST BE USED ONLY FOR THE PURPOSES FOR WHICH IT IS DEVELOPED. THE USER AGREES NOT TO DISCLOSE TO A THIRD PARTY AND TO RETURN THE SAME TO AMCOR TOSOL PLASTICS UPON COMPLETION OF AND IN ACCORDANCE WITH THE TERMS OF A CONFIDENTIAL AGREEMENT BETWEEN AMCOR TOSOL PLASTICS AND THE USER. THIS DRAWING IS THE PROPERTY OF AMCOR TOSOL PLASTICS.