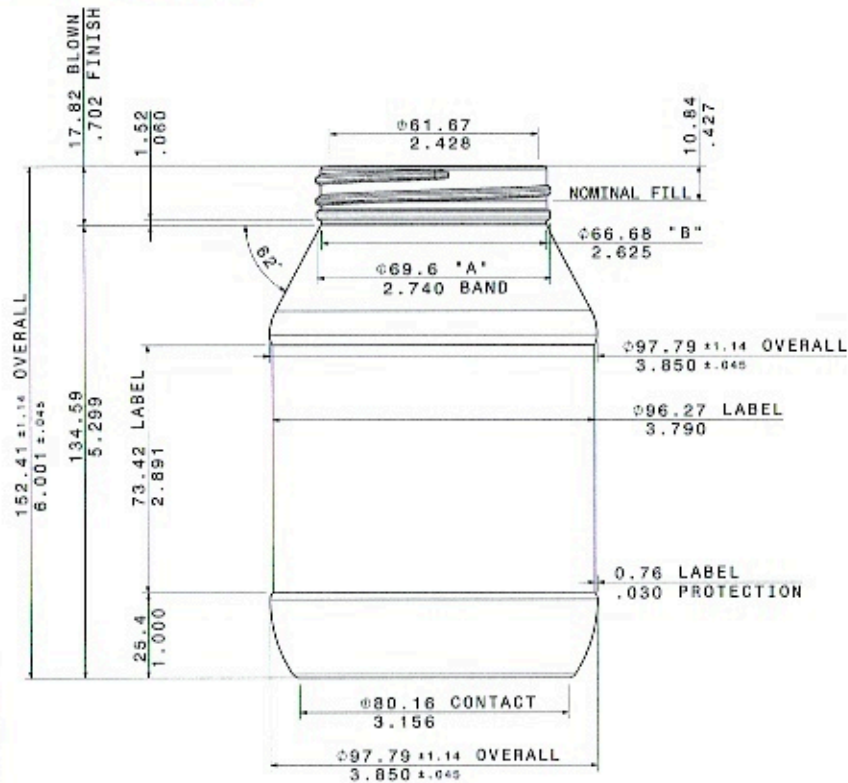
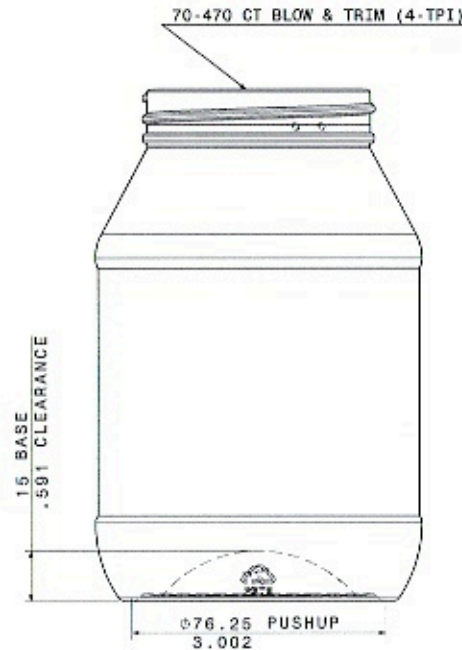


©AS OF DATE BELOW AMCOR RIGID PLASTICS.

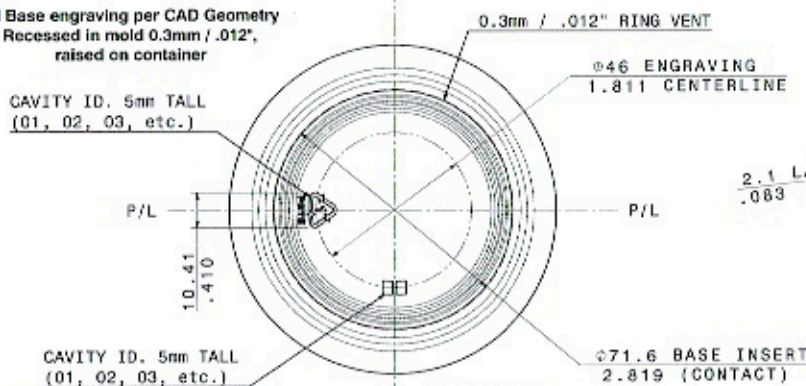


Left view
Scale: 1:1

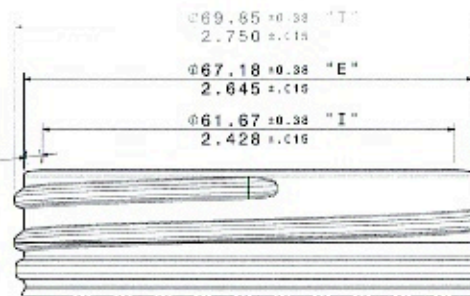


Front view
Scale: 1:1

All Base engraving per CAD Geometry
Recessed in mold 0.3mm / .012",
raised on container



Bottom View
Scale: 1:1



Finish Detail
Scale: 2:1

Rev	Description	By	Date	ECR
A	Original Release	RJS	05DEC11	4100001408-000
B	T, E, I TOLERANCE MMS ±.010"	RJS	05_APR12	4100001408-010
C	UPDATED PER ECR855	RJS	20MAY12	4100001408-020

Notes:

1. Dimensions are nominal in millimeters.
2. This drawing represents the bottle 72 hours after manufacture when stored at normal conditions.
3. The dimensional tolerances to be applied to all height dimensions are the same as the clearance applied to the Overall Height of the container.
4. The dimensional tolerances to be applied to all diameter, width and thickness dimensions are the same as the tolerance applied to the major diameter or width of the container.
5. The weight shown on the drawing is based on the design weight of the preform. The actual weight will vary based on the actual production weight of the preforms.
6. The fill levels are based upon water at room temperature.

Capacity Specification

Overflow Capacity		932 ± 15 ml	
Volume & Weight Information			
Calculated Overflow Capacity:		Calculated Full Line Capacity:	
922.7	ml	887	ml
Total Net Vol.:	Material:	Container Target Weight:	
31.50	PET	43.0 ± 2.0 gm	
Net Vol. in Cont. Body:	As Blown Density:	Container Body Weight:	
26.81	1.365 gm/cc	36.6 gm	
Net Vol. in Finish:	Finish Density:	Finish Weight:	
4.69	1.365 gm/cc	6.4 gm	
Surface Area Below Neck Finish:		Avg. Wall Thickness:	
517.885	sq. cm	.024" / 0.61 mm	

Drawing Information

Perform Drawing:	Finish Drawing:	Reference Drawing:
P-3963-PD	F-3508-PD	C-5411-PD-E
Date:	Drawn By:	Customer:
05DEC11	RJS	AMCOR

Title: 30oz STOCK JAR

Drawing Type: Product Drawing

Drawing Number: C-6647-PD

CONFIDENTIAL

3D CAD IS THE MASTER MODEL FOR THIS PRODUCT

THIS DOCUMENT IS THE EXCLUSIVE PROPERTY OF AMCOR RIGID PLASTICS. THE INFORMATION CONTAINED HEREIN, AND ANY MODEL CONTAINER, PREFORM OR OTHER ARTICLE RECEIVED, IS OF A CONFIDENTIAL AND PROPRIETARY NATURE AND MUST BE USED ONLY FOR THE PURPOSE FOR WHICH IT IS DISCLOSED. THE HOLDER AGREES NOT TO DISCLOSE TO A THIRD PARTY AND TO RETURN THE SAME TO AMCOR RIGID PLASTICS UPON COMPLETION OF USE OR REQUEST. THIS DRAWING IS NO LONGER A CONTROLLED DOCUMENT WITHIN AMCOR RIGID PLASTICS. DO NOT ASSUME THAT THIS IS THE CURRENT DRAWING.



C-6647-PD C