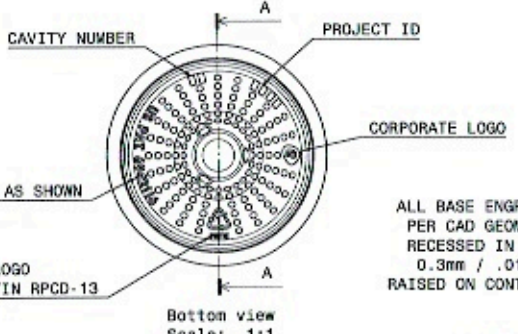


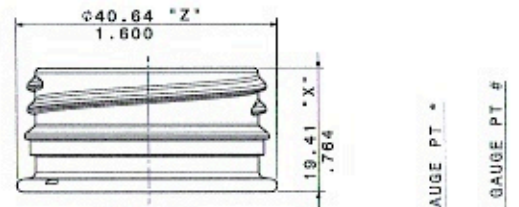
Front view
Scale: 1:1



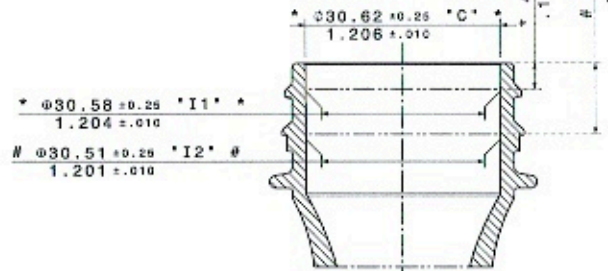
Bottom view
Scale: 1:1

Features or characteristics of Amcor Rigid Plastics hot fillable PET beverage containers may be protected by, but not limited to, one or more of these U.S. patents:

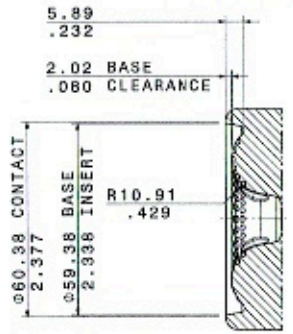
5,337,909	5,704,504	6,223,920
6,837,390	6,942,116	7,150,372
7,377,399	7,451,886	7,887,315 B2



Front view
Scale: 2:1
F-3063-PD



PREFORM VIEW
P-3577-PD
Scale: 2:1



Detail B
Scale: 1:1

ALTERNATIVE PREFORMS

DESCRIPTION	"Z" & DIMENSION	MAT'L VOLUME IN BODY	AVG. WALL THICKNESS	PREFORM DRAWING	FINISH DRAWING	CONTAINER HEIGHT
37.1gn 38mm	40.64mm / 1.600"	21.95 cc	0.53mm / .020"	P-3210-PD-K	F-3063-PD	198.71mm / 7.823"

Rev	Description	By	Date	ENR
A	Original Release	JBS	03DEC07	4160207000-000
B	MOVED NEW PRIMARY PARTS, TOLERANCE TO NEW CAD. CONTINUED	PM	03JUN08	4160207000-000
C	UPDATED TITLE BLOCK	PM	03JUN08	4160207000-000
D	New Base part-as noted 0307	MS	03OCT08	4160207000-000
E	REMOVED A ROW OF DIMPLES FROM BASE PATTERN	MS	03MAY09	4160207000-000
F	REVERSED PUSHUP	MS	03OCT09	4160207000-000
G	REMOVED DOUBLE DIMS, V2 AND 814	BSP	10OCT11	4160207000-000
H	UPDATED OVERFLOW CAPACITY SPECIFICATION	JMS	29FEB12	4160207000-000

DIMENSIONS/SPECIFICATIONS MARKED WITH *** INDICATE "AS MANUFACTURED" VALUES.

- Notes:
- Dimensions are nominal in millimeters/inches.
 - The "As Delivered" specifications apply to containers at the time of delivery to the customer. This assumes that the bottles have been produced, stored, and transported in accordance with agreed Good Manufacturing Practices as defined in ISO-9000 and associated standards.
 - The dimensional tolerances to be applied to all height dimensions are the same as the tolerance applied to the Overall Height of the container.
 - The dimensional tolerances to be applied to all diameter, width and thickness dimensions are the same as the tolerance applied to the major diameter or width of the container.
 - Overflow is based on the target capacity of water at its density when heated to 85°C / 185°F, incorporating headspace, tolerances, and expected water loss over shelf life.
 - Minimum fill level: Bottom of support flange.
 - Maximum fill temperature: 85°C / 185°F.
 - The weight shown in the drawing is based on the design weight of the preform/preform. Actual weights may vary if other suitable preforms are used.
 - Toleranced dimensions marked with *** are used in ongoing manufacturing control and those marked with "M" are used only for initial qualification.
 - For Active Rings containers, the overall and label panel height dimensions are shown as delivered. Based on fill conditions, a reduction in overall and label panel heights is possible post-fill.

CONFIDENTIAL

Capacity Specification

Overflow Capacity: **500 ± 11 ml**

Volume & Weight Information

Calculated Overflow Capacity:	498.8 ml	Calculated Fill Line Capacity:	485 ml		
Total Mat'l vol.:	26.9 cc	Material:	PET	Container Target Weight:	37.0 ± 0.4 gm
Mat'l vol. in Cont Body:	21.1 cc	As blown density:	1.371 gm/cc	Container Body Weight:	28.9 gm
Mat'l vol. in Preform:	5.8 cc	Preform density:	1.335 gm/cc	Preform Weight:	7.8 gm
Surface Area Below Neck Finish:	406.7 sq.cm	Req. Wall Thickness:	.020" / 0.52 mm		

Drawing Information

Preform Drawing:	P-3577-PD-B	Finish Drawing:	F-3220-PD	Reference Drawing:	C-3935-ES4-C
Date:	03DEC07	Drawn By:	JBS	Customer:	

Title: 16oz A/V Powerflex Longneck

Drawing Type: PRODUCT DRAWING
Drawing Number: C-4724-PD
Rev: H

CONFIDENTIAL

3D CAD IS THE MASTER MODEL FOR THIS PRODUCT
THIS DOCUMENT IS THE EXCLUSIVE PROPERTY OF AMCOR RIGID PLASTICS. THE INFORMATION CONTAINED HEREIN, AND ANY MODEL CONTAINER, PREFORM OR OTHER ARTICLE RECEIVED, IS OF A CONFIDENTIAL AND PROPRIETARY NATURE AND MUST BE USED ONLY FOR THE PURPOSE FOR WHICH IT IS DISCLOSED. THE HOLDER AGREES NOT TO DISCLOSE TO A THIRD PARTY AND TO RETURN THE SAME TO AMCOR RIGID PLASTICS UPON COMPLETION OF USE OR REQUEST. THIS DRAWING IS NO LONGER A CONTROLLED DOCUMENT WITHIN AMCOR RIGID PLASTICS. DO NOT ASSUME THAT THIS IS THE CURRENT DRAWING.