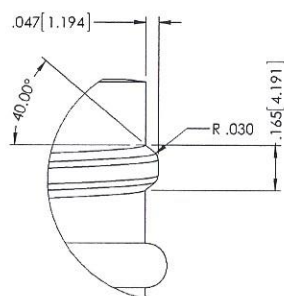
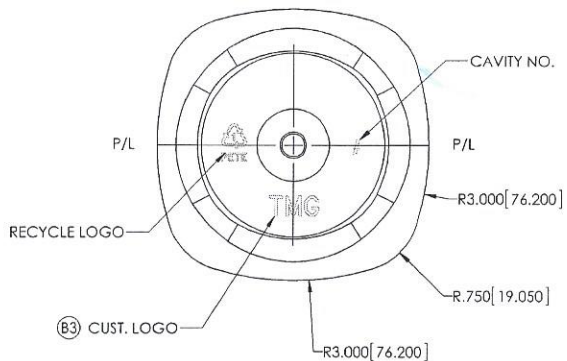
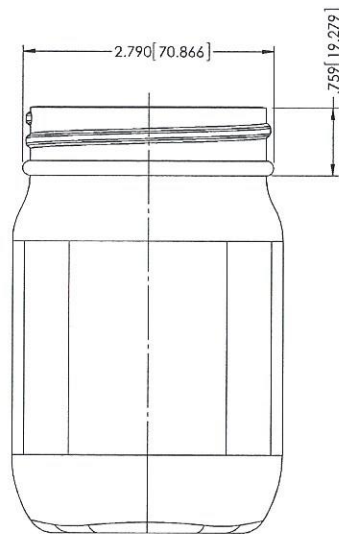


DETAIL A  
SCALE 6 : 1



DETAIL C  
SCALE 3 : 1

C2	CML	THREAD PROFILE CHANGED	12 AUG/13			
C1	CML	THREAD DETAIL VIEW ADDED	12 AUG/13			
B3	CML	TMG LOGO ADDED ON BOTTOM	9 AUG/13			
B2	CML	THREAD PROFILE CHANGED(REF-35658-P)	9 AUG/13			
B1	CML	'S' DIM WAS .070" NOW .046"	9 AUG/13			
A3	CML	O/F WAS 520cc NOW 522.6cc	19/7/2013			
A2	CML	MAX INSERT WIDTH AND HEIGHT SHOWN	19/7/2013			
A1	CML	INDENT AREA REMOVED	19/7/2013			
NO.	REV.	BY	DESCRIPTION	DATE		
NECK FINISH:		70mm SPECIAL	GRAM WT. 32g ± 2			
'T'	'E'	'H'	'S'	'L'	'W'	
2.719 ± 0.017	2.625 ± 0.017	.594 ± 0.015	.046 ± 0.015			
69.06 ± 0.43	66.68 ± 0.43	15.09 ± 0.38	1.17 ± 0.38			
HELIX <:		1° 42'	T.P.I.:	4	CUTT. DIA.:	.500

DRAWING CHECKED SPECIFICALLY FOR:  
 NECK FINISH .....  
 WEIGHT .....  
 CAPACITY .....  
 MATERIAL .....  
 SPECIAL REQUESTS .....  
 PRODUCT DESIGN TO BE APPROVED BEFORE MOULD CAVITIES ARE MACHINED.  
 APPROVED BY .....  
 DATE .....  
 This drawing subject to standard industry tolerances  
 5/1

CAPACITY TO FILL LEVEL BEFORE DECORATING		
CAPACITY TO FILL LEVEL AFTER DECORATING		
OVERFLOW CAPACITY BEFORE DECORATING	522.6cc ± 11 (A3)	
OVERFLOW CAPACITY AFTER DECORATING		
DRAWN BY:	CML	DESC. 16 OZ CYLINDER
SCALE: 1:1	DATE: 17 JULY/13	DRAWING NO. 16-36709-PC
BOTTLE MAT'L:	PETE	MOULD NO. ----
CAD NAME: PD		

TEMPORARY DRAWING-NOT RELEASED FOR PRODUCTION  
 THIS IS A SUGGESTED DESIGN FOR CUSTOMER APPROVAL.  
 FINAL SIZES AND VOLUME ARE SUBJECT TO MOULDING  
 SPECIFICATIONS AND PRODUCTION QUALIFICATIONS.