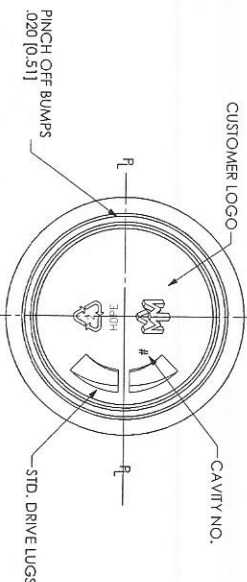


FOR REFERENCE ONLY



TEMPORARY DRAWING-NOT RELEASED FOR PRODUCTION
 This is a suggested design for customer approval.
 Final sizes and volume are subject to moulding specifications and production qualifications.

CML MOULD NO. 48-32802-33

Drawing checked specifically for:
 Neck finish:
 Weight:
 Capacity:
 Material:
 Special Requests:
 Product design to be approved before mould cavities are machined.
 Approved By:
 Date:

No. Rev. No.	Description	Date			
A3	CDL O/F WAS 635ml ±13	JUNE 2/08			
A2	CDL HEGHT WAS 8350 [212.09] REF.	JUNE 2/08			
A1	CDL 'H' WAS .403 ±.15 [10.24 ±0.38]	JUNE 2/08			
No Rev. No. Description Date					
Neck Finish: M38-SP400 (SPECIAL 'H') (A1) Gram Wt.: 40 ±2.5					
'T'	'E'	'H'	'S'	'L'	'W'
1.464 ±.012	1.370 ±.012	.450 ±.015	.046 ±.015		
37.19 ±0.30	34.80 ±0.30	11.43 ±0.38	1.17 ±0.38		
HELIX ANGLE: 2°9'			TP.1.: 6	CUTT. DIA.: .500 [12.70]	
Capacity to fill level before decorating			AS NOTED		
Capacity to fill level after decorating			AS NOTED		
Overflow Capacity before decorating			636ml ±13 (A3)		
Overflow capacity after decorating					
Drawn By:	001	Desc.	21oz./600ml CYLINDER		
Scale:	Date: MAY29/08	Drawing No.	48-8240-PA		
Bottle Matl:	HDPE	Mould No.	MMP# 1072		
Cad Name:					