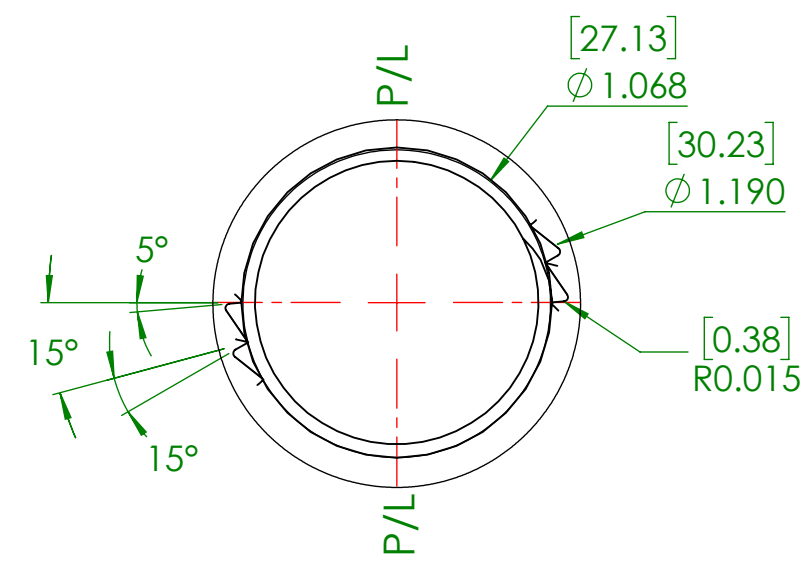
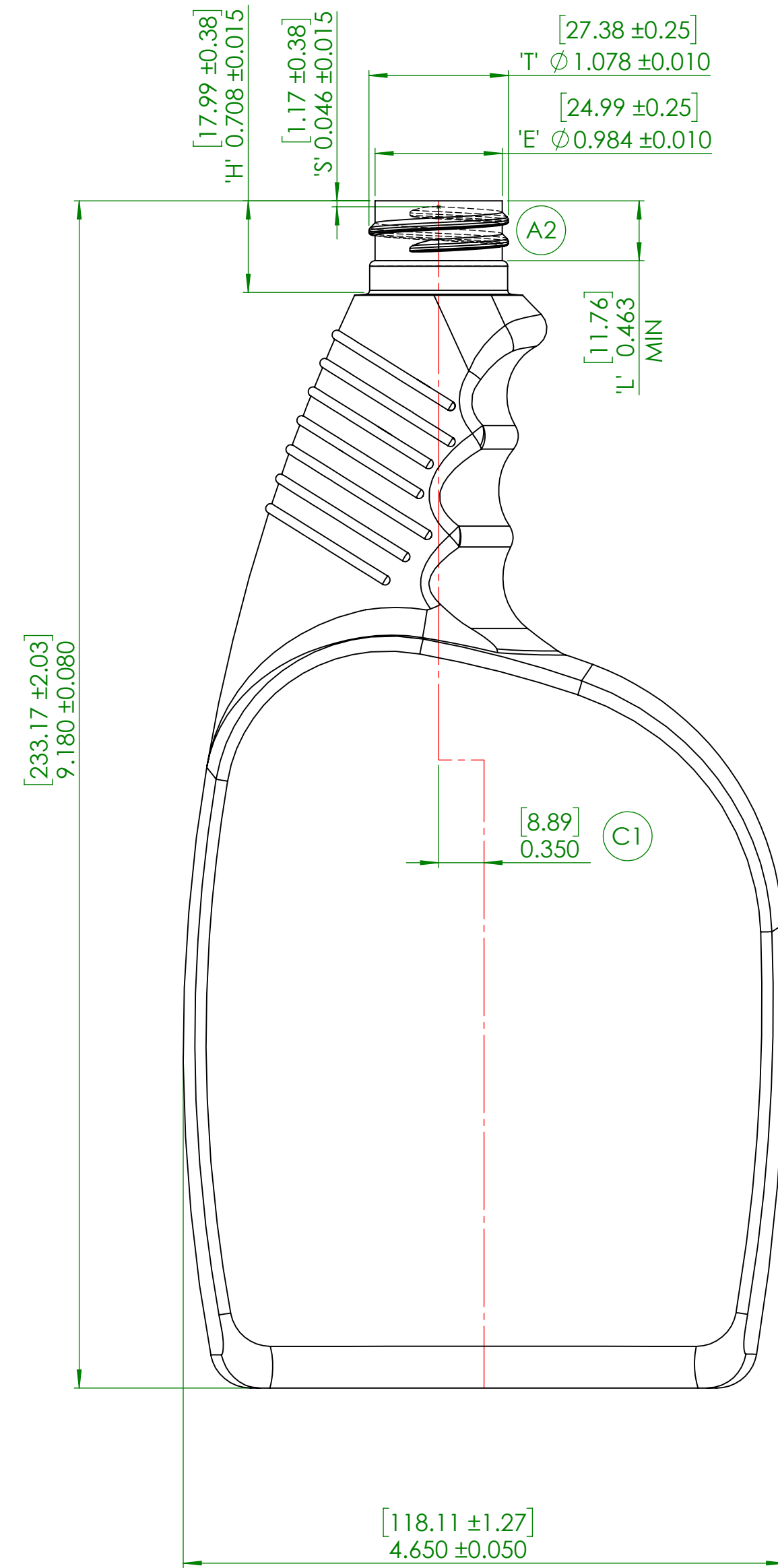
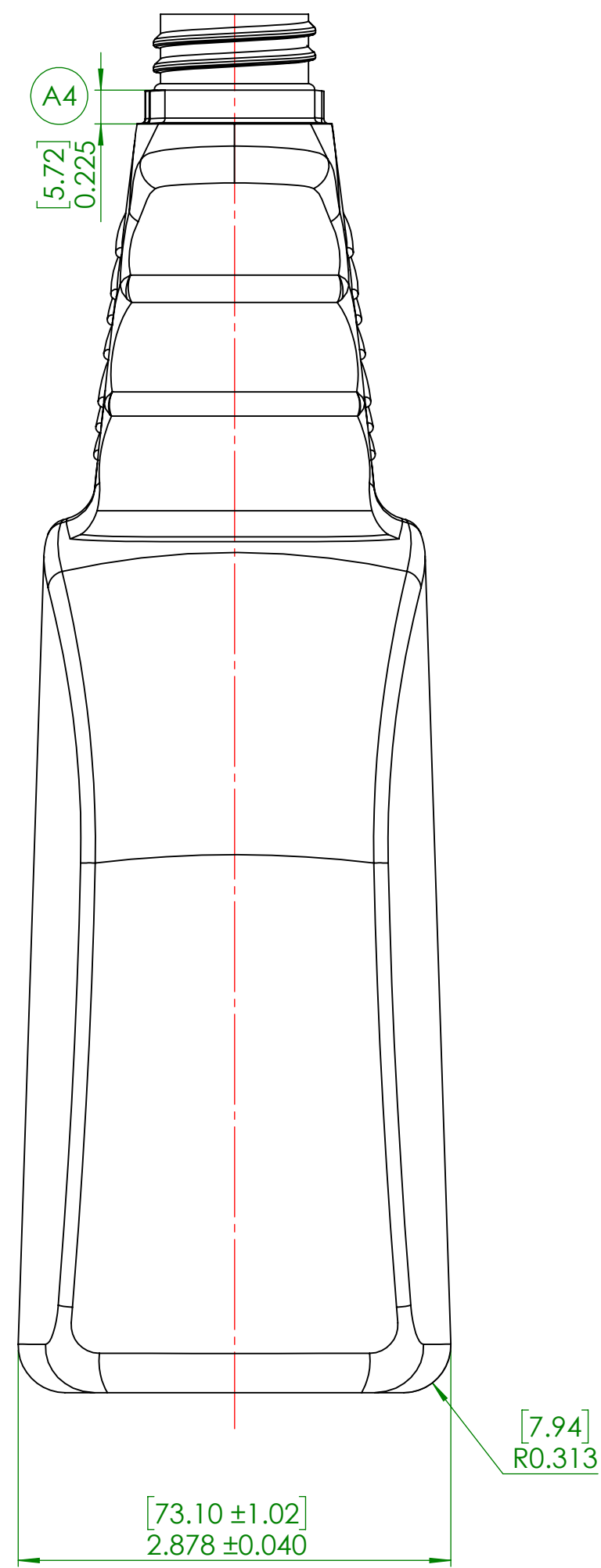


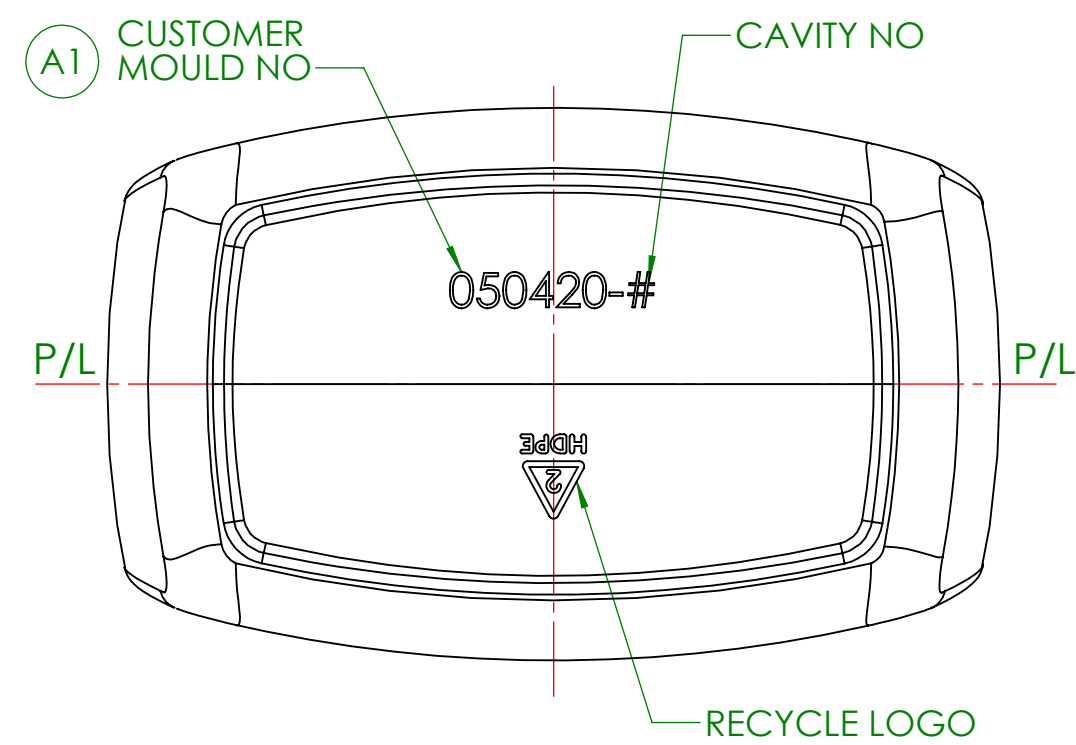
M28-SP410 (WITH RATCHET)



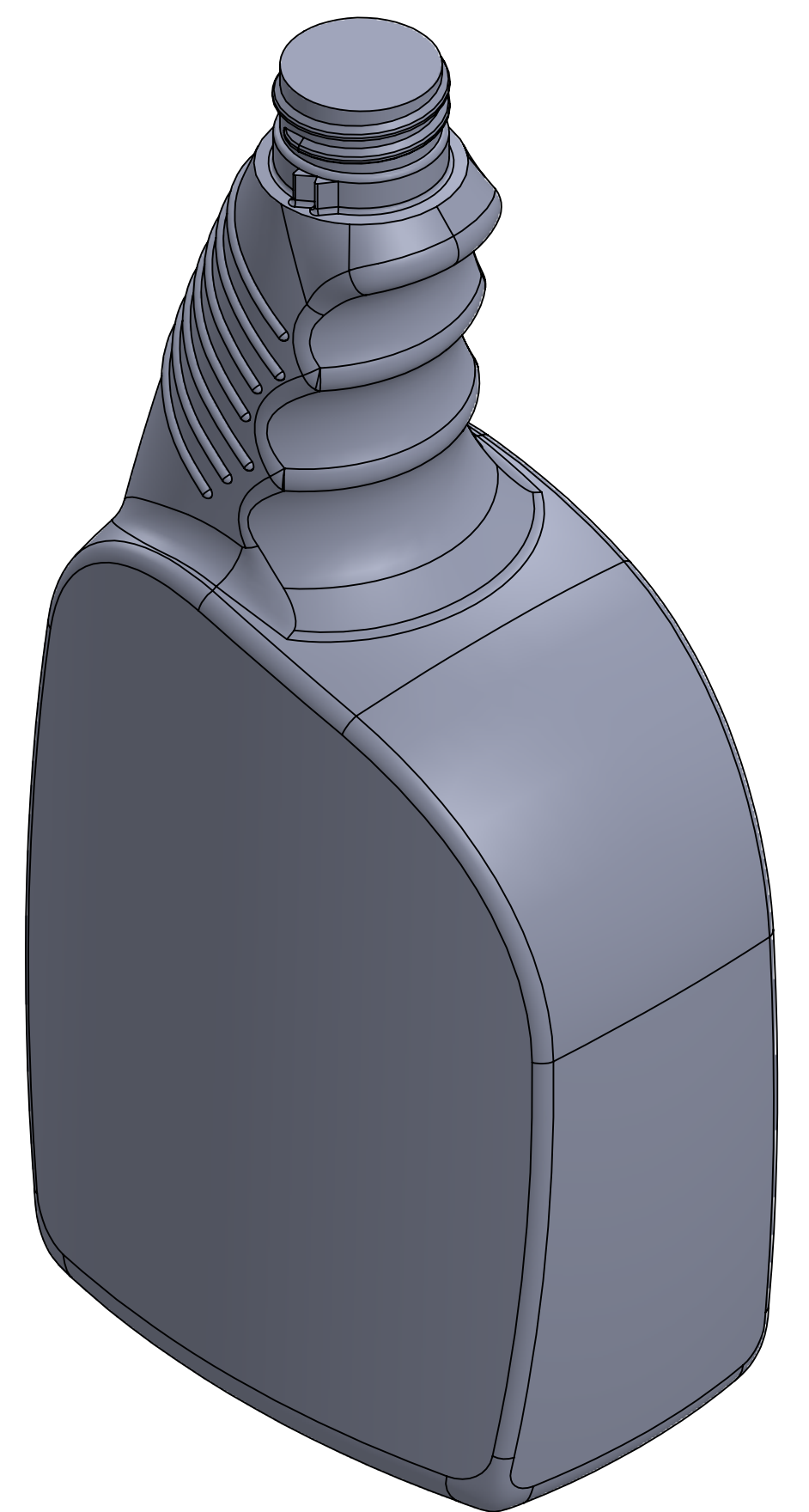
RATCHET DETAIL SCALE 1.5 : 1



ALT NECK M28-SP410 (WITHOUT RATCHET)



REVISIONS			
NO.	BY	DESCRIPTION	DATE
A1	CML	CUSTOMER MOULD NO IS ADDED	MAY.26/20
A2	CML	NECK FINISH CHANGED TO STANDARD M24-SP410 NECK	MAY.26/20
A3	CML	DRAWING NO WAS 42558-3	MAY.26/20
A4	CML	RATCHET HEIGHT WAS 0.280"	MAY.26/20
B1	CML	BLENDED RADIUS AT BOTTOM	MAY.28/20
C1	CML	CENTER DISTANCE ADDED	JUN.10/20
D1	CML	ALT NECK-2 M28-SP400 ADDED ON PAGE-2	JUN.10/20
E1	CML	'H' CHANGED TO 0.478", WAS 0.400" (ALT NECK-2)	OCT.13/20
E2	CML	'H' TOLERANCE - 0.010", WAS 0.015" (ALT NECK-2)	OCT.13/20
E3	CML	OAH CHANGED TO 8.938", WAS 8.860" (ALT NECK-2)	OCT.13/20
E4	CML	ALT NECK-2 M28-400 SPECIAL, WAS M28-SP400	OCT.13/20
F1	CML	'H' TOLERANCE - 0.015", WAS 0.010" (ALT NECK-2)	OCT.14/20
F2	CML	TORQUE RAMPS ARE ADDED (ALT NECK-2)	OCT.14/20



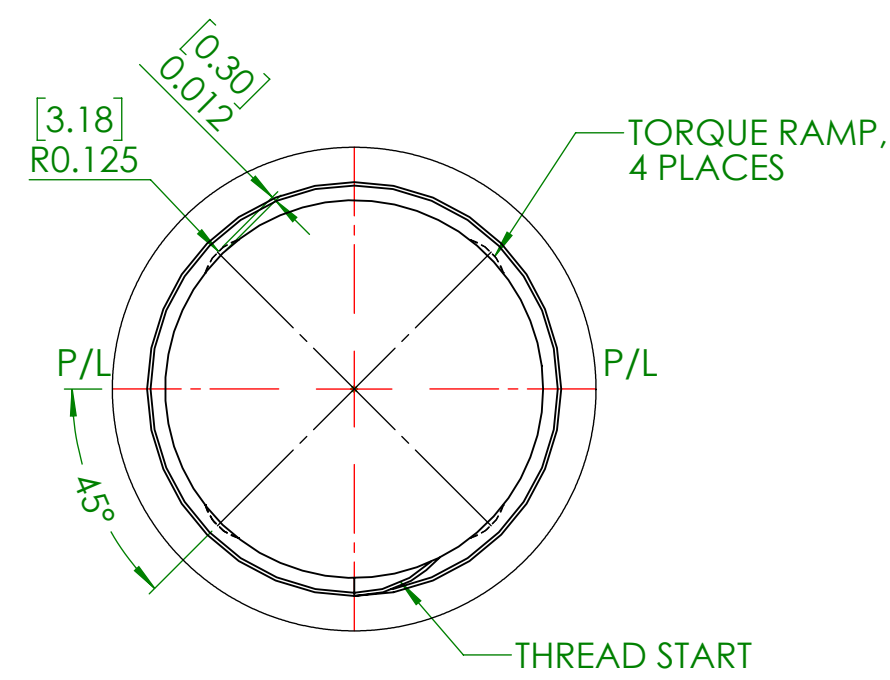
TEMPORARY DRAWING-NOT RELEASED FOR PRODUCTION

THIS IS A SUGGESTED DESIGN FOR CUSTOMER APPROVAL. FINAL SIZES AND VOLUME ARE SUBJECT TO MOULDING SPECIFICATIONS AND PRODUCTION QUALIFICATIONS.

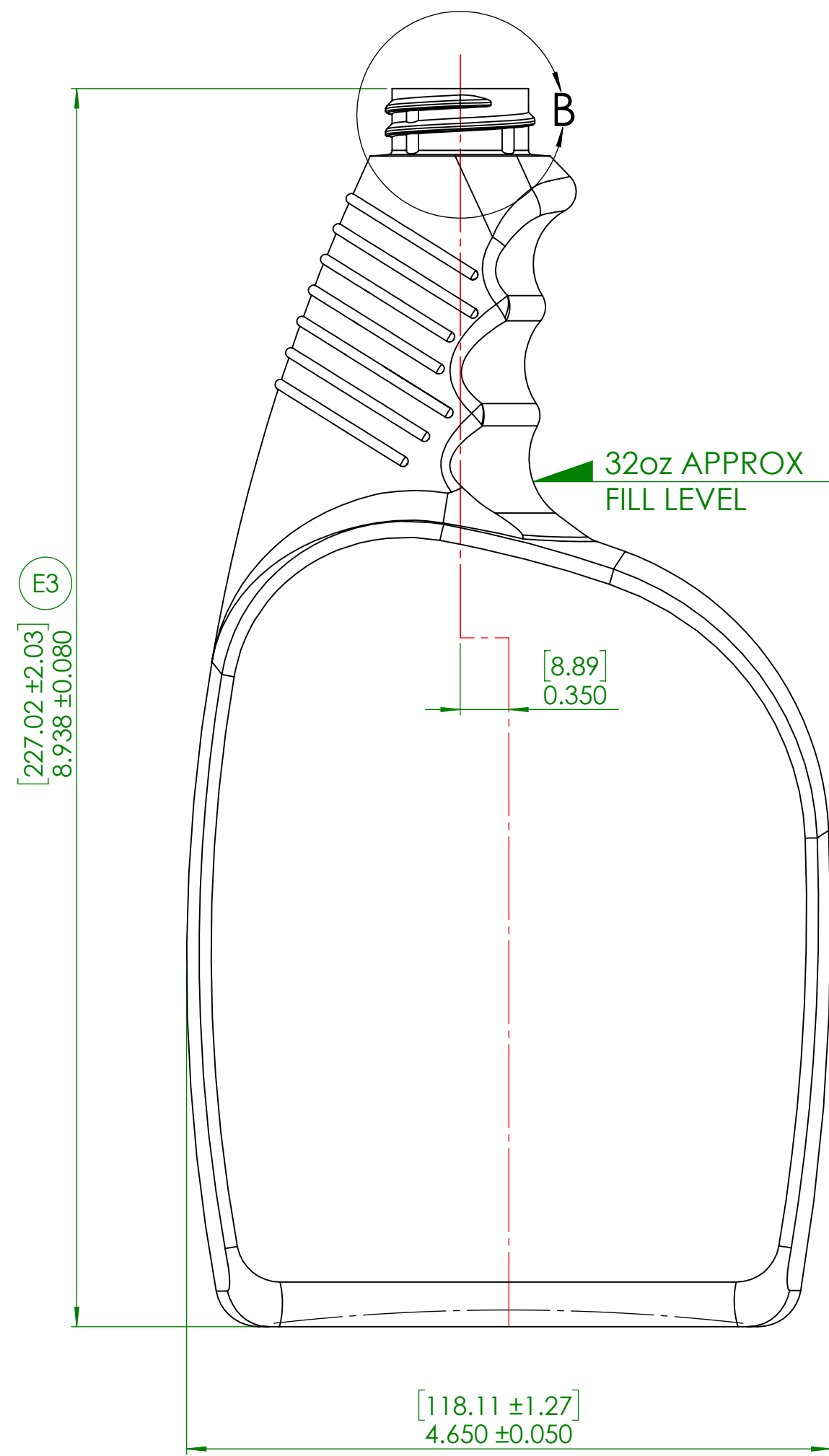
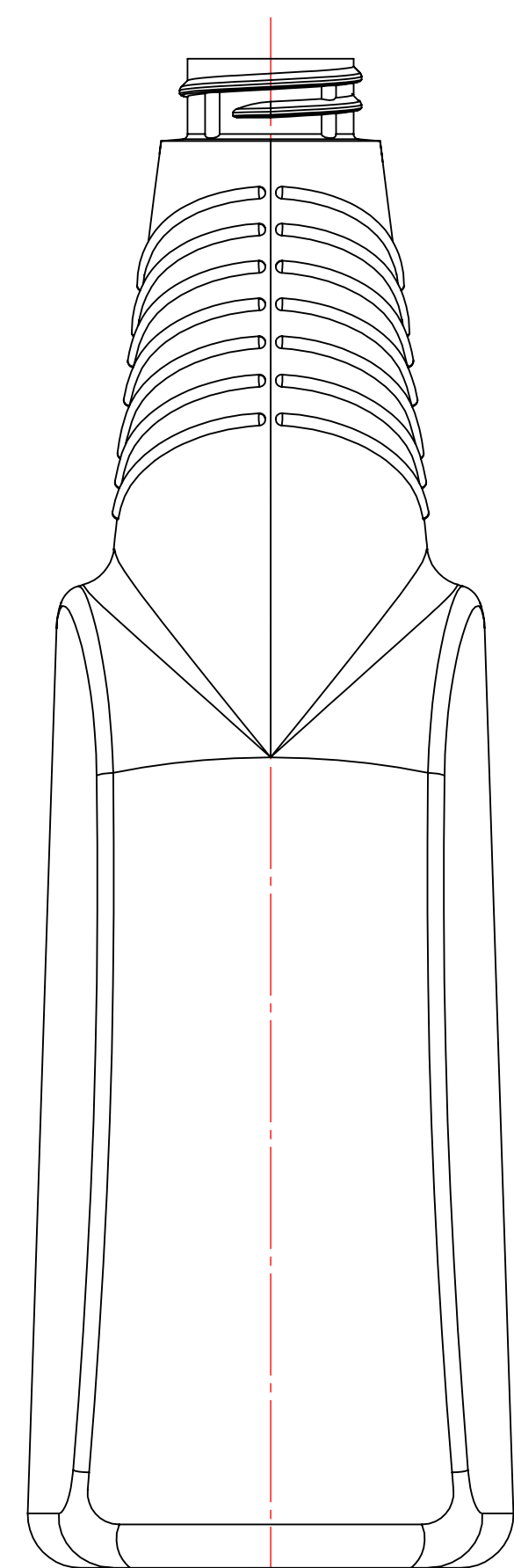
DRAWING CHECKED SPECIFICALLY FOR:
 NECK FINISH
 WEIGHT
 CAPACITY
 MATERIAL
 SPECIAL REQUESTS
 PRODUCT DESIGN TO BE APPROVED BEFORE MOULD CAVITIES ARE MACHINED.
 APPROVED BY
 DATE
 This drawing subject to standard industry tolerances S.P.I.



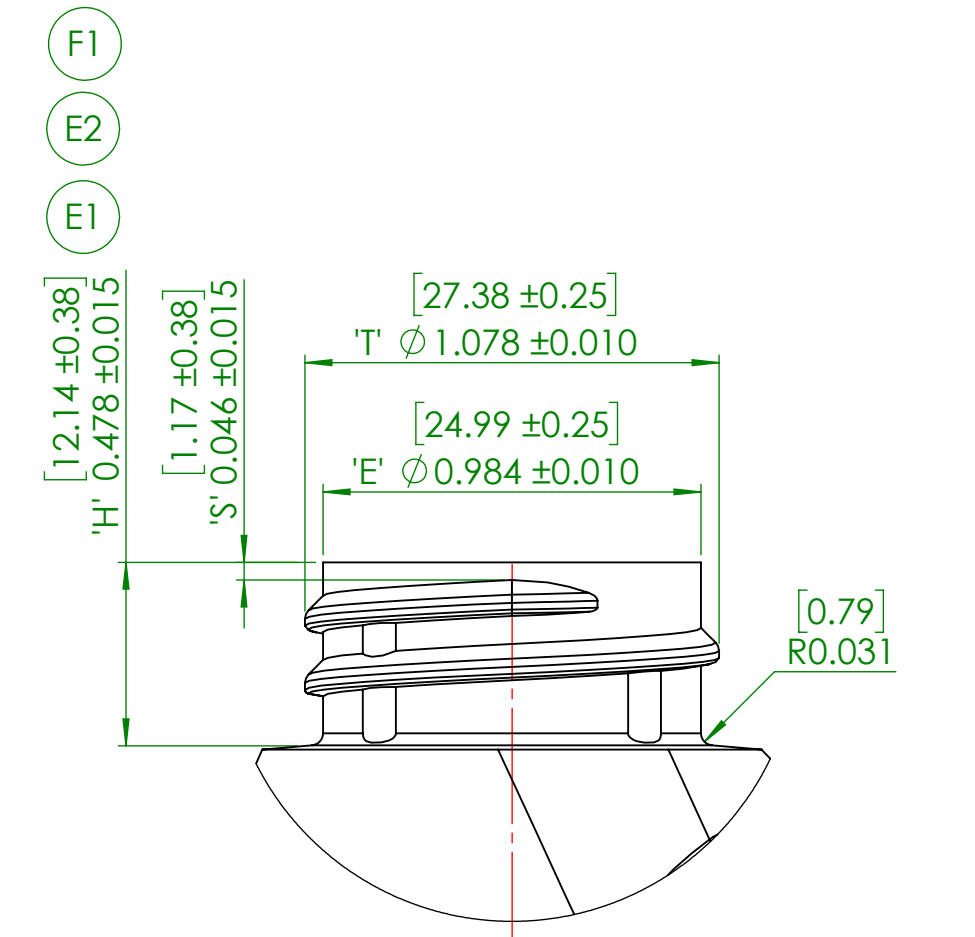
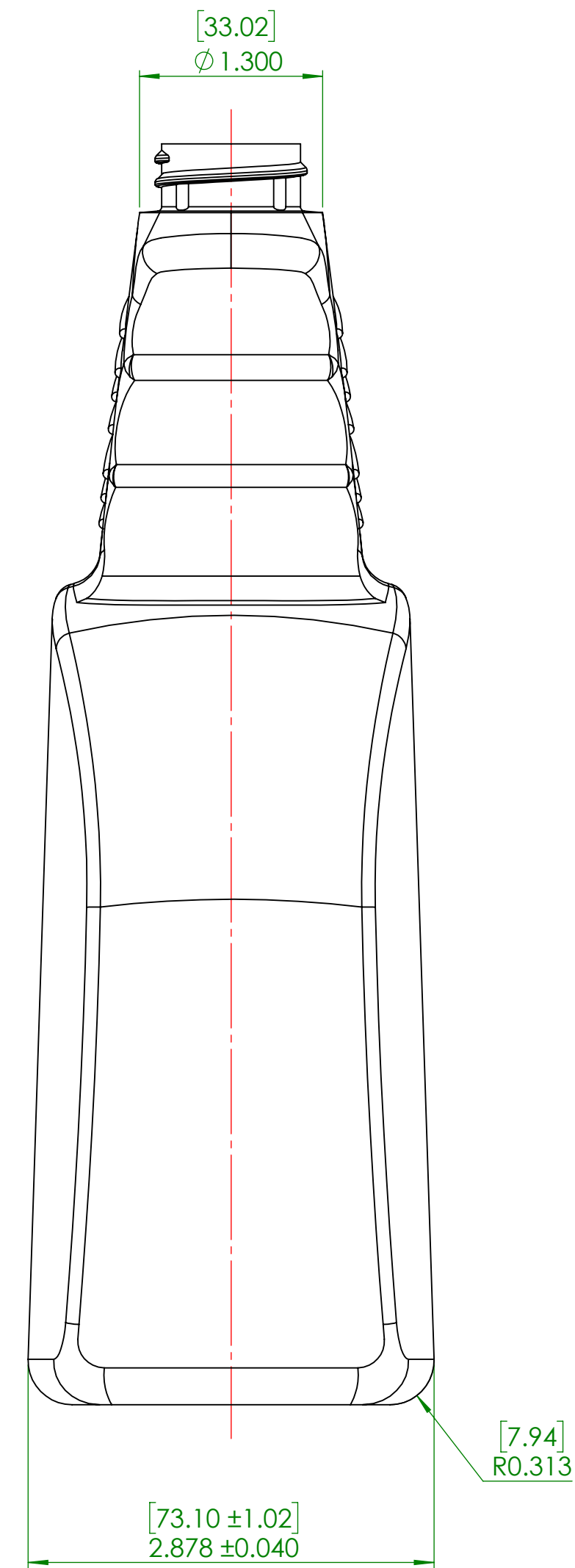
CAPACITY TO FILL LEVEL: 947ml ± 15	
OVERFLOW CAPACITY: 1045ml ± 15	
NECK FINISH: M28-SP410	WEIGHT: 50g ± 2
DRAWN BY: CML	DESC: 32oz Trigger Sprayer
SCALE: 1:1	DATE: MAY.25/20
BOTTLE MAT'L: HDPE	DRAWING NO. 42558-8F A3
CAD NAME: 42558-8	MOULD NO. 42558



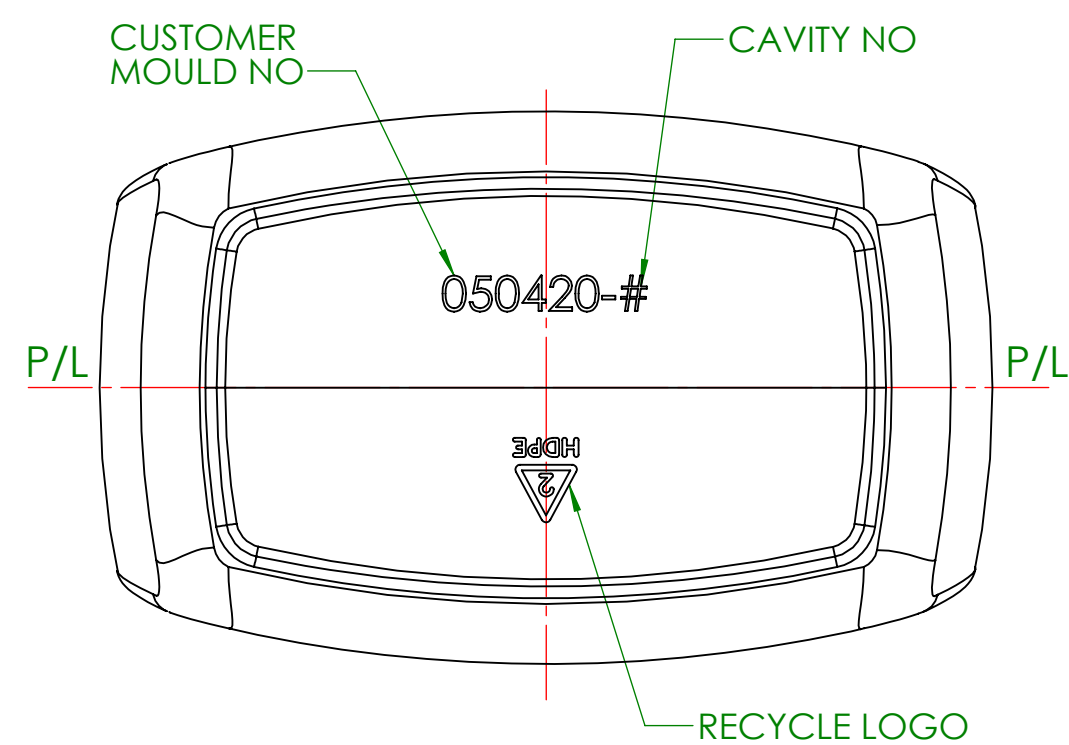
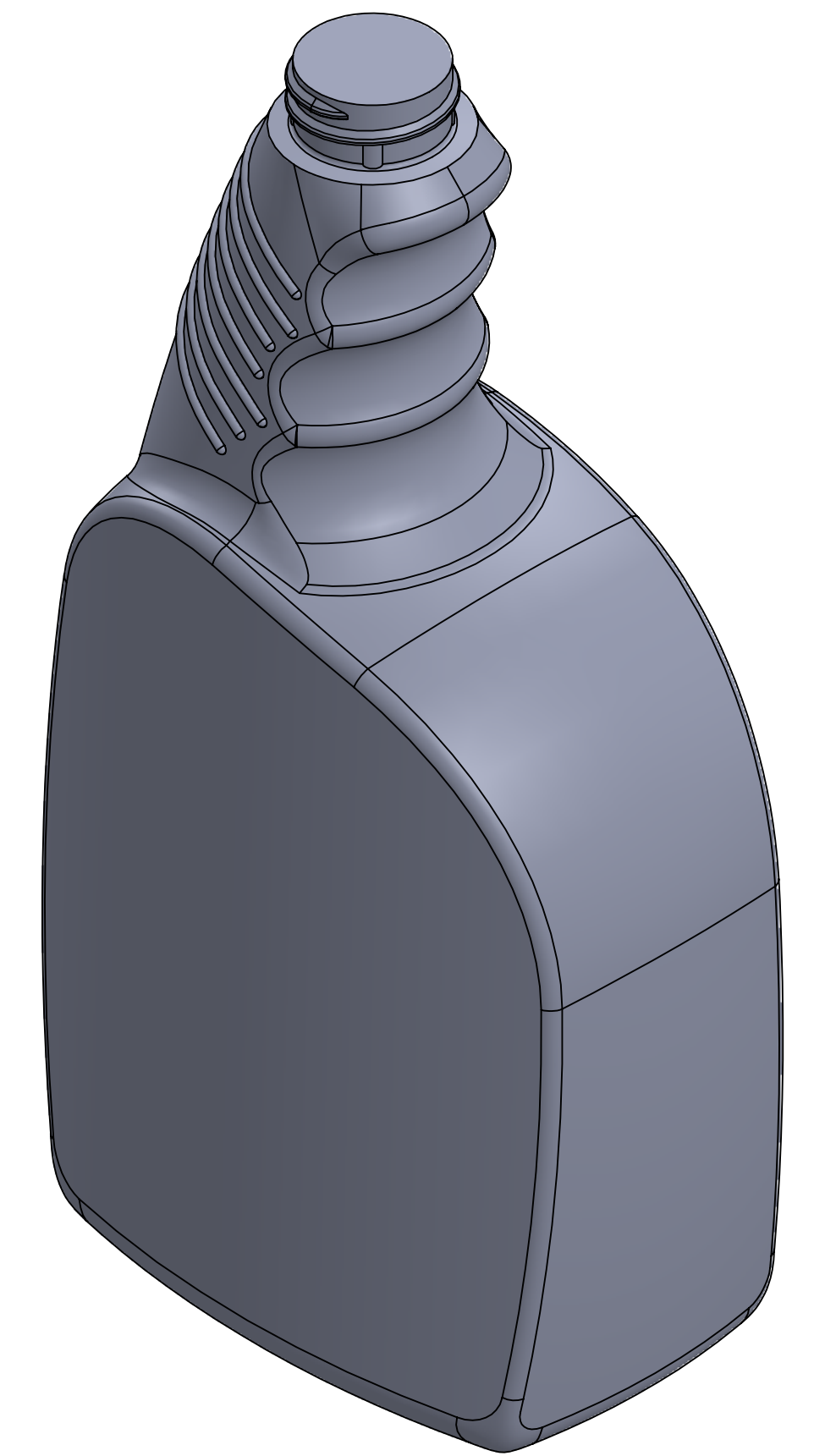
DETAIL OF TORQUE RAMP (F2)
SCALE 2:1



ALT NECK-2 M28-SP400 (D1)
OFC-1040ml ± 15



DETAIL B
SCALE 2 : 1
ALT NECK-2 M28-400 SPECIAL (D1) (E4)



REVISIONS			
NO.	BY	DESCRIPTION	DATE
A1	CML	CUSTOMER MOULD NO IS ADDED	MAY.26/20
A2	CML	NECK FINISH CHANGED TO STANDARD M24-SP410 NECK	MAY.26/20
A3	CML	DRAWING NO WAS 42558-3	MAY.26/20
A4	CML	RATCHET HEIGHT WAS 0.280"	MAY.26/20
B1	CML	BLENDING RADIUS AT BOTTOM	MAY.28/20
C1	CML	CENTER DISTANCE ADDED	JUN.10/20
D1	CML	ALT NECK-2 M28-SP400 ADDED ON PAGE-2	JUN.10/20
E1	CML	'H' CHANGED TO 0.478", WAS 0.400" (ALT NECK-2)	OCT.13/20
E2	CML	'H' TOLERANCE - 0.010", WAS 0.015" (ALT NECK-2)	OCT.13/20
E3	CML	OAH CHANGED TO 8.938", WAS 8.860" (ALT NECK-2)	OCT.13/20
E4	CML	ALT NECK-2 M28-400 SPECIAL, WAS M28-SP400	OCT.13/20
F1	CML	'H' TOLERANCE - 0.015", WAS 0.010" (ALT NECK-2)	OCT.14/20
F2	CML	TORQUE RAMP ARE ADDED (ALT NECK-2)	OCT.14/20

TEMPORARY DRAWING-NOT RELEASED FOR PRODUCTION
THIS IS A SUGGESTED DESIGN FOR CUSTOMER APPROVAL.
FINAL SIZES AND VOLUME ARE SUBJECT TO MOULDING
SPECIFICATIONS AND PRODUCTION QUALIFICATIONS.

DRAWING CHECKED SPECIFICALLY FOR:
NECK FINISH
WEIGHT
CAPACITY
MATERIAL
SPECIAL REQUESTS
PRODUCT DESIGN TO BE APPROVED BEFORE MOULD CAVITIES ARE MACHINED.
APPROVED BY
DATE
This drawing subject to standard industry tolerances S.P.I.



CAPACITY TO FILL LEVEL: 947ml ± 15	
OVERFLOW CAPACITY: 1045ml ± 15	
NECK FINISH: M28-SP410	WEIGHT: 50g ± 2
DRAWN BY: CML	DESC: 32oz Trigger Sprayer
SCALE: 1:1	DATE: MAY.25/20
BOTTLE MAT'L: HDPE	DRAWING NO. 42558-8F (A3)
CAD NAME: 42558-8	MOULD NO. 42558